

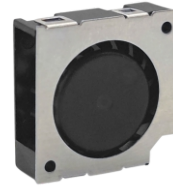
2006 Blower Series

Dimensions: 20X20X06 mm

Bearing Type: Hydraulic

Function Type: FG/RD Signal, PWM pulse

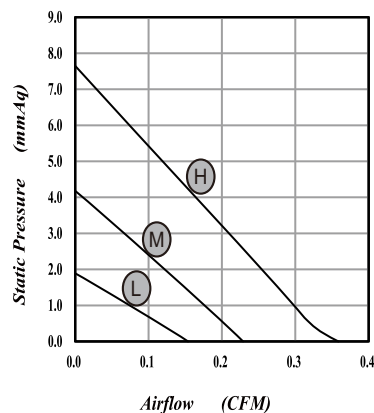
Protection: Auto Restart Protection or General Options



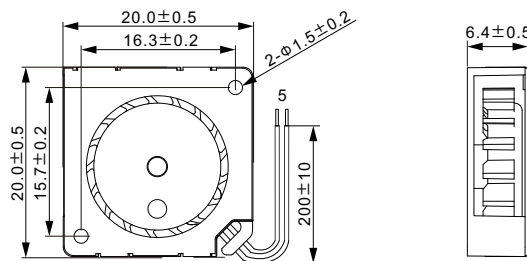
SPECIFICATIONS

| MODEL NO | VOLTAGE | CURRENT | POWER | SPEED | AIR FLOW | | STATIC PRESSURE | | NOISE | CURVE |
|-------------------|---------|---------|-------|-------|----------|------|--------------------|--------------------|-------|-------|
| | V | A | W | RPM | CMM | CFM | mmH ₂ O | INH ₂ O | (dBA) | |
| 2006RVL-N (P/M) 5 | 5 | 0.10 | 0.50 | 9000 | 0.004 | 0.15 | 1.89 | 0.074 | 19.5 | L |
| 2006RVM-N (P/M) 5 | 5 | 0.15 | 0.75 | 13000 | 0.006 | 0.23 | 4.18 | 0.165 | 29.5 | M |
| 2006RVH-N (P/M) 5 | 5 | 0.20 | 1.00 | 17000 | 0.010 | 0.36 | 7.65 | 0.301 | 36.4 | H |
| 2006RVL-N (P/M) 1 | 12 | 0.06 | 0.72 | 9000 | 0.004 | 0.15 | 1.89 | 0.074 | 19.5 | L |
| 2006RVM-N (P/M) 1 | 12 | 0.10 | 1.20 | 13000 | 0.006 | 0.23 | 4.18 | 0.165 | 29.5 | M |
| 2006RVH-N (P/M) 1 | 12 | 0.15 | 1.80 | 17000 | 0.010 | 0.36 | 7.65 | 0.301 | 36.4 | H |

PERFORMANCE CURVES



DIMENSIONS DRAWING



*Specifications are subject to change without notice